

ILSC UNIVERSITY PATHWAY

YOUR HIGHER EDUCATION
GOALS START HERE

ADELAIDE | BRISBANE | MELBOURNE | SYDNEY | MONTRÉAL | TORONTO | VANCOUVER

WWW.ILSC.COM/PROGRAMS/UNIVERSITY-PATHWAY



CELEBRATING 30 YEARS OF
EMPOWERING STUDENTS THROUGH EDUCATION

Last updated May 9, 2022



LANGUAGE
SCHOOLS

FAST FACTS

NUMBER OF PARTNER SCHOOLS

160+ AUSTRALIA
CANADA
USA

1198 SUCCESSFUL UNIVERSITY
PATHWAY GRADUATES
JOINED PARTNER SCHOOLS IN 2018

18 TOTAL UNIVERSITY PATHWAY
ELECTIVE
COURSES

15 UNIVERSITY PATHWAY
ACADEMIC
ADVISORS

CHOOSE UNIVERSITY PATHWAY WITH ILSC

For almost a decade our program has supported thousands of ILSC students to gain a strong foundation in the English language and attain their higher education goals. Our University Pathway Team is here to help ensure successful entry to our locally and globally recognized partner schools, and beyond!

Seamless language entry to select programs at all our University Pathway Partners*

**Some Australian University Pathway partners require additional testing.*

Partner school **guest lectures, tours, and information sessions**



Progress monitoring and online practice resources ensure students reach their required entry level

Choice of 160 + partner schools in Canada, Australia, & USA

Confirmation of enrollment or a conditional letter of acceptance will save a seat in a partner school

Academic skill building: lecture comprehension, note-taking, research skills, and academic discussion

75+ Masters and PhD programs

Academic counselling to help choose and apply to colleges & universities

WHY ILSC?

ILSC has hosted 230,000 students from 100+ countries over 28 years. We've won awards, forged connections, and changed lives with our philosophy of empowering students to reach their potential, enjoy learning, and to participate in a connected and caring global community. ILSC's University Pathway program delivers transformative learning experiences in 6 cities around the world: Vancouver, Toronto, and Montréal, in Canada, and Sydney, Melbourne, and Brisbane in Australia.

FIVE STEPS TO CREATE YOUR PATH

1 CHOOSE

Choose an ILSC campus in one of 6 different cities in Canada or Australia. Options include the world-class cities of Vancouver, Toronto, Montréal, Sydney, Brisbane, and Melbourne. Then take our online language test and get assessed for your current language level - this will set your University Pathway program study length.



2 STUDY

Study English to reach the entry level required by your desired partner school, and prepare for a successful post-secondary journey with essential skills preparation, such as lecture comprehension, note-taking, research, and academic discussion.



3 APPLY

Apply to one of our 160+ partner schools with your ILSC letter of acceptance, and the support of academic counsellors to help guide you in your career and education goals.



4 TRANSFER

Transfer seamlessly without worrying about IELTS or TOEFL tests. Successful graduates of ILSC's University Pathway program will be able to enter directly into their chosen partner school once they have completed the University Pathway program*.



5 SUCCEED

Succeed at your future goals! You're a post-secondary student now with all the educational, immigration, and career opportunities that offers.

*Some Australian University Pathway partners require additional testing.



CANADA

UNIVERSITY PATHWAY PROGRAM SAMPLE SCHEDULE AND REQUIRED COURSES

Students must complete 2 ILSC levels of required courses. Your schedule and required courses will depend on the ILSC Language Entry Level required for your chosen program at your partner school.

FOR PARTNER PROGRAMS REQUIRING ILSC INTERMEDIATE 4

HOURS	INTERMEDIATE 3	INTERMEDIATE 4
9:00 AM – 12:00 PM	English for Academic Purposes–Intermediate 3 (Optional: IELTS Preparation OR Cambridge courses)	English for Academic Purposes–Intermediate 4
1:00 PM – 2:30 PM	Required Elective*	Academic Writing 1
2:45 PM – 4:00 PM	Required Elective*	Academic Speaking & Listening

FOR PARTNER PROGRAMS REQUIRING ILSC ADVANCED 1

HOURS	INTERMEDIATE 4	ADVANCED 1
9:00 AM – 12:00 PM	English for Academic Purposes–Intermediate 4 (Optional: IELTS Preparation OR Cambridge courses)	English for Academic Purposes–Advanced 1
1:00 PM – 2:30 PM	Academic Writing 1	Academic Writing 2
2:45 PM – 4:00 PM	Required Elective*	Academic Speaking & Listening

FOR PARTNER PROGRAMS REQUIRING ILSC ADVANCED 2

HOURS	ADVANCED 1	ADVANCED 2
9:00 AM – 12:00 PM	English for Academic Purposes–Advanced 1 (Optional: IELTS Preparation OR Cambridge courses)	English for Academic Purposes–Advanced 2
1:00 PM – 2:30 PM	Academic Writing 2	Academic Writing 3
2:45 PM – 4:00 PM	Academic Speaking & Listening	Required Elective*

*Students must choose from the following elective course options and should consult their University Pathway advisor to choose the best electives for their academic needs and goals: Academic Vocabulary, Public Speaking, Reading, Grammar, Listening, Pronunciation, Vocabulary, Test Preparation, and more. Course selection is subject to availability and may vary depending on enrolment.

Students must choose from the following elective course options and should consult their University Pathway advisor to choose the best electives for their academic needs and goals: Academic Vocabulary, Public Speaking, Reading, Grammar, Listening, Pronunciation, Vocabulary, Test Preparation, and more.

Program Length*: Minimum 8 weeks (based on Full-Time Intensive Schedule)

Entry Requirement: Students must take ILSC's Pre-Registration Online Language Assessment (PROLA). The program entry requirement depends on your chosen college or university program**.

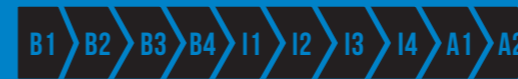
*Program length will vary based on student's language level.

**Students may register for the program at any level. Lower level students can take foundation courses until they are ready to begin their required courses.



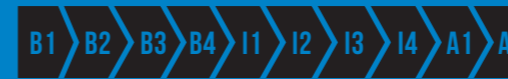
CANADA PARTNER SCHOOLS





SCHOOL NAME	LOCATION	UNIVERSITY TRANSFER/ ASSOCIATE DEGREE		CERTIFICATE/ DIPLOMA		BACHELORS		POST GRADUATE CERTIFICATE/ DIPLOMA		MASTERS		POPULAR FIELDS	ADDITIONAL INFORMATION
		ILSC LEVEL*	‡CLOA	ILSC LEVEL*	‡CLOA	ILSC LEVEL*	‡CLOA	ILSC LEVEL*	‡CLOA	ILSC LEVEL*	‡CLOA		
Acadia University	Wolfville, NS	N/A		N/A		A2	Yes	N/A		N/A		Biology, Marketing	
Adler University	Vancouver, BC	N/A		N/A		N/A		N/A		A2	Yes	Organizational Psychology, Public Policy, Administration	
Alexander College	Vancouver, BC	A2	Yes	N/A		N/A		I4, A1, A2	Yes	N/A		University Transfer (UT)	Level determines which class is required- ILSC I4: EAP 098, ILSC A1: EAP 099, ILSC A2: Direct Entry
Algoma University	Sault Saint Marie, ON	N/A		N/A		A2	Yes	N/A		N/A		Computer Science, Biology, Accounting, Marketing, Computer Games Technology	
Algonquin College**	Ottawa, ON	A1, A2	Yes	A1, A2	Yes	A1, A2	Yes	A2	Yes	N/A		Hairstyling, Business, Computer Systems, Hospitality, Automotive	Oversubscribed programs are not offered conditionally
Ascenda School of Management	Vancouver, BC	N/A		I4, A1, A2	Yes	I4, A1, A2	Yes	N/A		N/A		Business Administration	Level determines which class is required- ILSC I4 : EAP 3, ILSC A1: EAPP 100, ILSC A2: Direct Entry
Assiniboine Community College	Brandon, MB	N/A		A2	Yes	N/A		N/A		N/A		Business Administration	ILSC A2 requires average B grade
Bishop's University	Sherbrooke	N/A		A2	Yes	A2	Yes	A2	Yes	A2		Business, Fine Arts, Environmental Studies	
Bow Valley College	Calgary, AB	N/A		N/A		N/A		A2	Yes	N/A			Only programs that require a 6.0 IELTS are a part of the agreement.
Brock University	Saint Catharines, ON	N/A		N/A		A2	Yes	A2	Yes	A2	Yes	Business Administration, Computer Science, Education	MBA (International Student Pathway): no GMAT required if enrolling in 1 month of Business English
Camosun College	Victoria, BC	A2	Yes	A2	Yes	A2	Yes	N/A		N/A		Early Learning & Care, Community Family & Child Study	
Capilano University**	Vancouver, BC	I4	Yes	I4	Yes	I4	Yes	N/A		N/A		ECE (Early Childhood Education), Tourism, North American Business Management, Business Administration	Diploma / Degree: require ILSC I4 + Capilano's EAP 090, 100, 101, + Academic Programs
Cégep de la Gaspésie et des Îles	Montreal, QC	N/A		I4	Yes	N/A		N/A		N/A		Social Science, Science	
Centennial College**	Toronto, ON	A2	Yes	A2	Yes	A2	Yes	N/A		N/A		Aviation, Hospitality Management, Tourism, Automotive, Medical Laboratory Technician	Additional testing required for Graduate Certificates
Centennial Montreal	Montreal, QC	I2	Yes	N/A		N/A		N/A		N/A		University Transfer (UT), Business, Social Sciences	
Columbia College	Vancouver, BC	A1	Yes	A1	Yes	N/A		A2	Yes	N/A		University Transfer (UT), High School Year 11/12	
Conestoga College	Kitchener, ON	A1	Yes	A1	Yes	A2	Yes	A2	Yes	N/A		Truck and Coach Technician, Automotive, Electrical Engineering Technology	
Confederation College	Thunder Bay, ON	N/A		A1, A2	Yes	N/A		A2	Yes	N/A		Dental Hygiene, Aviation	
Corpus Christi College**	Vancouver, BC	I4	Yes	N/A		N/A		N/A		N/A		University Transfer (UT)	
Douglas College	Vancouver, BC	A2	Yes	A2	Yes	A2	Yes	A2	Yes	N/A		University Transfer (UT), Business Management, Hospitality Management, Music, Stagecraft, Marketing	
Durham College	Oshawa, ON	A1, A2	Yes	A1, A2	Yes	N/A		A1, A2	Yes	N/A		Animation	
Fairleigh Dickinson University**	Vancouver, BC	N/A		N/A		I4, A2	Yes	N/A		I4, A2	Yes	Masters of Administrative Science, Masters of Science in Hospitality Management	Two entry points are available I4 (bridge), A2 (direct entry)
Fanshawe College**	London, ON	A2	Yes	A2	Yes	N/A		N/A		N/A		Motive Power Technician, Aviation Technician, Culinary, Hairstylist, Fashion Merchandising, ECE, Design	Pre-Health program required prior to any health related program / Degree programs / Graduate Certificate: Fanshawe's ELE in house test required. ILSC A2 requires average A grade
Fleming College	Peterborough, ON	A1	Yes	A1	Yes	N/A		A2	Yes	N/A		University Transfer (UT)	
George Brown College	Toronto, ON	A2	Yes	A2	Yes	N/A		A2	Yes	N/A		Culinary, Baking, Hospitality, Tourism, Construction, ECE, Fashion (Jewelry) Design	Bridging programs with Ryerson University
Georgian College	Barrie, ON	N/A		A2	Yes	A2	Yes	A2	Yes	N/A		Opticianry, Denturism, Tourism-Marketing, Product Development	
Granville College	Vancouver, BC/	N/A		A1	Yes	N/A		N/A		N/A		Veterinary Technician Assistant program (Diploma)	
Greystone College	Vancouver, BC/ Toronto, ON/ Montreal, QC	N/A		B4, I2, I3, I4, A2	Yes	N/A		N/A		N/A		Business, Hospitality, Digital Marketing	
Herzing College	Surrey, BC	N/A		A1	Yes	N/A		N/A		N/A		Design, Business, Technology	
Humber College	Toronto, ON	A1	Yes	A1	Yes	A2	Yes	A2	Yes	N/A		Global Business Management, Advertising & Marketing Communications, Food and Nutrition Management, Hospitality	2-year post graduate programs available ILSC A2 requires average B+ grade
Inter-Dec College	Montreal, QC	N/A		I2, I3, I4	Yes	N/A		N/A		N/A		Digital Arts, Beauty	Additional testing required for certain programs
Justice Institute	Montreal, QC	N/A		N/A		A2	Yes	A2	Yes	N/A		Only 4 programs: Post-Baccalaureate Diploma in Law Enforcement Studies, Post-Baccalaureate Diploma in Disaster Management, Law Enforcement Studies Diploma, Bachelor of Law Enforcement Studies	Additional testing required for certain programs
John Casablancas Institute	Vancouver, BC	N/A		I3, I4, A1	Yes	N/A		N/A		N/A		Fashion, Hair, Make-up	
Lakehead University	Thunder Bay, ON	N/A		N/A		A2	Yes	N/A		A2	Yes	Natural Science	MBA: No GMAT score required if enrolling in a 4 month business skills development program
Lambton College	Toronto/Sarnia, ON	I4	Yes	I4	Yes	A1	Yes	A1		N/A		Marketing	Many 2-year post graduate program options
LaSalle College	Vancouver, BC/ Montreal, QC	N/A		I3, I4, A1	Yes	N/A		N/A		N/A		Fashion Design	
Laurentian University	Sudbury, ON	N/A		N/A		A2	Yes	N/A		A2	Yes	Commerce (Sports Admin), Nursing, Health Science (Midwifery), MBA	MBA: no GMAT required, Graduate programs: students must complete University Pathway and then apply

* Some partner schools accept various language entry levels depending on program. Please contact ILSC to confirm the entry requirement for your specific program of interest. ** These partner schools may have additional requirements. Please inquire with ILSC for more information. Students might/may not be admitted to oversubscribed programs or other programs closed to international students.



SCHOOL NAME	LOCATION	UNIVERSITY TRANSFER/ ASSOCIATE DEGREE		CERTIFICATE/ DIPLOMA		BACHELORS		POST GRADUATE CERTIFICATE/ DIPLOMA		MASTERS		POPULAR FIELDS	ADDITIONAL INFORMATION
		ILSC LEVEL*	‡CLOA	ILSC LEVEL*	‡CLOA	ILSC LEVEL*	‡CLOA	ILSC LEVEL*	‡CLOA	ILSC LEVEL*	‡CLOA		
Le Cordon Bleu	Ottawa, ON	N/A		I3	Yes	N/A		N/A		N/A		Culinary	
Lester B. Pearson School Board	Montréal	N/A		I3	Yes	N/A		N/A		N/A		Vocational programs: Hairdressing, Beauty Care, Culinary Arts, Pastry, professional cooking, automobile mechanics, accounting, medical office specialist and more	
Manitoba Institute of Trades and Technology	Winnipeg, MB	N/A		A1	Yes	N/A		N/A		N/A		Hospitality, Culinary, Hairstyling and Esthetics, Automotive, Welding	Masters Programs / Pharmacy Technician: ILSC A2, All Other Programs: ILSC A1
Mohawk College	Hamilton, ON	N/A		A1, A2	Yes	N/A		A2	Yes	N/A		Early Childhood Education, Aircraft Maintenance, Computer Systems Technician-Software Support	
Mount Saint Vincent University	Halifax, NS	N/A		N/A		A2	Yes	N/A		A2	Yes	Public Relations and Education	Graduate programs: pre-Masters required
New Image College	Vancouver, BC	N/A		I1, I3	Yes	N/A		N/A		N/A		Acting, Make-up, Spa	Make-up and Spa Programs: ILSC I1, Acting: ILSC I3
Niagara College	Saint Catherine, ON	N/A		A1	Yes	A2	Yes	A2		N/A		Hospitality, Culinary, Hairstyling and Esthetics Automotive, Welding, Winery, Brewmaster, Hospitality, Culinary Management	
North Island College	Victoria, BC	A2	Yes	A2	Yes	A2	Yes	A2	Yes	N/A		University Transfer (UT)	Guaranteed admission to UVIC
NYIT-New York Institute of Technology	Vancouver, BC	N/A		N/A		N/A		N/A		A2	Yes	Masters of Science, Energy Management	Masters Program admission requires a GPA of 2.85 or higher
Olds College	Olds, Alberta	N/A		A1, A2		A1, A2		A1, A2		N/A		Agriculture, Business, Hospitality Horticulture and Animal Science	
Royal Roads University	Victoria, BC	N/A		N/A		I4	Yes	A2	Yes	A2	Yes	Global Management, Environmental Program, Tourism Management	Two entry levels - I4 = additional requirements, A2 for direct entry, Digital Marketing Profession / Work Study / Full-Stack Programs: ILSC A2
SAIT -Southern Alberta Institute of Technology	Calgary, AB	N/A		I4, A1	Yes	A2	Yes	A1	Yes	N/A		Avionics Technology, Petroleum Engineering Technology, Aircraft Maintenance Engineers Technology, Professional Cooking, Mining	Required Courses: SAIT English 20-1: ILSC I4, SAIT English 30-1: ILSC A1, SAIT English 30-1 (Bachelors): ILSC A2
Sault College	Sault Saint Marie, ON	N/A		A1	Yes	A1	Yes	A1	Yes	N/A		Business, Aviation, ECE, Engineering Technology, Culinary	
Selkirk College	Castlegar, BC	A1, A2		A1, A2		N/A		A1, A2		N/A		University Transfer (UT), Business, Culinary Management	
Seneca College**	Toronto, ON	A1	Yes	A1	Yes	N/A		N/A		N/A		Computer Programming, Flight Services, Tourism and Travel, Aviation, Business Administration, International Transportation and Customs	
Sheridan College	Toronto, ON	A2	Yes	A2	Yes	A2	Yes	A2	Yes	N/A		Interior Design, Visual & Creative Arts, Visual Effects, Television and Broadcasting, Game Design, Interaction Design, Web Design	Admissions requires ILSC A2 with A grade
St. Clair College	Windsor, ON	I4	Yes	I4	Yes	N/A		I4	Yes	N/A		University Transfer (UT)	University Transfer to University of Windsor
St. Lawrence College	Brockville, Cornwall, Kingston, ON	A2	Yes	A2	Yes	A2	Yes	A2	Yes	N/A		Game Development Technician, Computer & Engineering Technology, Hospitality & Tourism, Nursing	
Thompson Rivers University	Kamloops, BC	A2	Yes	A2	Yes	A2	Yes	A2	Yes	N/A		Tourism Management, Accounting, Education	
Toronto Film School	Toronto, ON	A1	Yes	I4	Yes	N/A		A1	Yes	N/A		Film Production	Toronto Film School transfer to Yorkville University requires ILSC A1
University Canada West	Vancouver, BC	N/A		N/A		A2	Yes	N/A		A2	Yes	Media and Communication, Commerce, MBA	No GMAT required for MBA with pre-MBA
University of Ontario Institute of Technology	Oshawa, ON	N/A		A2		A2	Yes	A2		N/A		Science, Engineering, Health and Information Technology	
University of Prince Edward Island	Charlottetown, PEI	N/A		N/A		A2	Yes	N/A		N/A		Science	
University of Regina	Regina, SK	N/A	Yes	A2	Yes	A2	Yes	A2	Yes	N/A		Engineering (Petroleum Engineering)	
University of the Fraser Valley**	Abbotsford, BC	N/A		N/A		A2	Yes	N/A		A2	Yes	Criminal Justice, Social Work	Masters Programs: require ILSC A2, additional requirements apply
University of Windsor**	Windsor, ON	I3, I4		N/A		N/A		N/A		N/A			
Vanarts	Vancouver, BC	N/A		I4		N/A		N/A		N/A		Animation, Film, Game Art & Design, Visual Effects	
Vancouver Community College	Vancouver, BC	A2	Yes	I3, A1, A2	Yes	N/A		A2		N/A		Hospitality, Culinary, Baking and Pastry, Cosmetology (Hairdressing and Skin Care), Automotive	Cosmetology (Hair Design, Skin and Body Therapy) / Baking & Pastry for International Students / Culinary Arts / Automotive Collision & Refinishing: ILSC I3, Automotive Service Technology: ILSC A1, Hospitality Management: ILSC A2, No University Pathway to Education and Health programs (International students not accepted)
Vancouver Film School	Vancouver, BC	A1, A2	Yes	A1, A2	Yes	N/A		A1	Yes	N/A		Film Production, Game Design	Foundation / Acting Essentials / Animation & Concept Art / Makeup / Sound Design: ILSC I4, All other programs: ILSC A1
Wilfrid Laurier International College	Branford, ONT	N/A		N/A		A1, A2		N/A		N/A			
AFFILIATED INSTITUTIONS													
BCIT - British Columbia Institute of Technology**	Vancouver, BC	N/A		N/A		N/A		N/A		N/A			Please inquire with ILSC for the entry requirements for this institution.
Kwantlen University**	Surrey, BC	N/A		N/A		N/A		N/A		N/A			Please inquire with ILSC for the entry requirements for this institution.
Langara College**	Vancouver, BC	N/A		N/A		N/A		N/A		N/A			Please inquire with ILSC for the entry requirements for this institution.

* Some partner schools accept various language entry levels depending on program. Please contact ILSC to confirm the entry requirement for your specific program of interest. ** These partner schools may have additional requirements. Please inquire with ILSC for more information.

Students might/may not be admitted to oversubscribed programs or other programs closed to international students.

AUSTRALIA

PROGRAM SAMPLE SCHEDULE AND REQUIRED COURSES

University Pathway students must complete at least 2 ILSC levels of required courses. The duration of your studies, your schedule, and required courses will depend on the ILSC Language Entry Level required for your chosen program at your partner school. You must complete the number of weeks required by the University Pathway partner and the final level for your chosen program. For example, a Pathway partner might require 12 weeks of EAP and a graduation level of A1.

COURSE* (TIME DEPENDS ON SCHEDULE CHOICE)	PRE-UNIVERSITY PATHWAY COURSES BEGINNER 1 TO BEGINNER 4	REQUIRED COURSES INTERMEDIATE 1 AND UP
Core Class	Students are advised to take Academic Preparation courses & skills electives. English for Academic Purposes can be taken from Intermediate 1 onwards.	English for Academic Purposes**
University Pathway Elective	Our Academic advisors will help you to create a study path that will help you attain your goals.	Choose from a selection of recommended University Pathway electives***
University Pathway Elective (Full-Time Intensive Students Only)		Choose from a selection of recommended University Pathway electives***

* Hours: 8:30am to 1:00pm (Full-Time), 5:30pm to 9:30pm (Full-Time), 2:00pm to 4:00pm (Full-Time Intensive). Full-Time or Full-Time Intensive optional, Full-Time Intensive is strongly recommended. The full-time intensive afternoon option is not available.

** An academic advisor will recommend skills courses based on your academic goals.

*** Recommended Skills Electives could include: Academic Speaking & Listening, Academic Writing, Academic Vocabulary, Public Speaking, Writing, Reading, Grammar, Listening, Pronunciation, Vocabulary, International Currents Events, Test Preparation, Business English.

All ELICOS programs are part of the English Language Programs for International Students CRICOS Code: 060152J.

ILSC (Brisbane) PTY LTD is trading as ILSC-Brisbane, ILSC-Sydney, ILSC-Melbourne, ILSC Greystone College and ILSC Australia RTO Number 31564, CRICOS Code: 02137M.

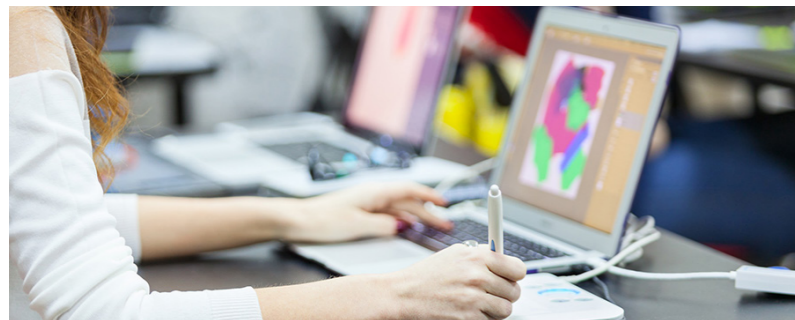
Program Length*: Minimum 8 weeks (based on Full-Time Intensive Schedule)

Entry Requirement: Students must take ILSC's Pre-Registration Online Language Assessment (PROLA). The program entry requirement depends on your chosen college or university program**.

* Program length will vary based on student's language level.

** Students may register for the program at any level. Lower level students can take foundation courses until they are ready to begin their required courses.

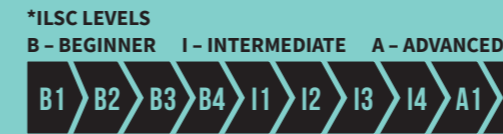
All ELICOS programs are part of the English Language Programs for International Students CRICOS Code: 060152J. ILSC (Brisbane) PTY LTD is trading as ILSC-Brisbane, ILSC-Sydney, ILSC-Melbourne, Greystone College and ILSC Australia RTO Number 31564, CRICOS Code: 02137M.



AUSTRALIA PARTNER SCHOOLS



AUSTRALIA PARTNERS



PARTNER SCHOOLS ENTRY REQUIRES ILSC LANGUAGE LEVELS TO BE REACHED.
 eg. A2 REQUIREMENT MEANS A1 LEVEL HAS BEEN FULLY COMPLETED.
 ‡CLOA – CONDITIONAL LETTER OF ACCEPTANCE
 VET ARTIC – VOCATIONAL EDUCATION TRAINING ARTICULATION

INSTITUTION	CAMPUS LOCATIONS	ILSC B4 – 12* IELTS 4.0–5.0	ILSC I3* IELTS 5.5	ILSC I4* IELTS 6.0	ILSC A1* IELTS 6.5	ILSC A2* IELTS 7.0	ADDITIONAL INFORMATION	VET ARTIC
Academia International RTO 21595, CRICOS 02634E	Brisbane, Melbourne		Early Childhood Education & Care, Individual Support & Aged Care Hospitality, Cookery/Patisserie, Hairdressing & Beauty, Accounting, Business & Marketing				Min. 12 weeks of University Pathway Program (EAP or IELTS)	NO
Academies Australasia RTO 90806, CRICOS 02398A	Sydney, Melbourne		Large variety of Certificate, Diploma, Advanced Diploma courses and Bachelor degrees available. Please check individual course information at https://academies.edu.au/				Min. 12 weeks of University Pathway Program (EAP, IELTS or FCE)	NO
ACCCO – Australian College of Child Care Options RTO 5404, CRICOS 02483D	Brisbane		Early Childhood Education & Care				Min. 12 weeks of University Pathway Program (EAP or IELTS)	NO
AFFT – Academy of Film, Theatre & Television RTO 90168, CRICOS 01544D	Sydney		Screen & Media, (Acting, Film or Live Production)				Min. 12 weeks of University Pathway Program (EAP or IELTS)	NO
AHTS RTO 0137, CRICOS 01774A	Adelaide		Hospitality, Commercial Cookery, Barista				Min. 12 weeks of University Pathway Program (EAP or IELTS)	NO
APM – College of Business and Communication RTO: 0269, CRICOS: 00246M	Adelaide, Brisbane, Melbourne, Sydney		Marketing	Business (Marketing, Event Management, Public Relations)			Min. 12 weeks of University Pathway Program (EAP or IELTS)	YES
Australasian College of Natural Therapies RTO: 0269, CRICOS: 00246M	Adelaide, Brisbane, Melbourne, Sydney		Health Science	Health Science (Naturopathy, Nutritional Medicine, Western Herbal Medicine)			Min. 12 weeks of University Pathway Program (EAP or IELTS)	NO
Australian Institute of Business Intelligence (AIBI) TEQSA: PRV14316, CRICOS 03844J	Sydney			International Business, Enterprise Management Systems			Min. 12 weeks of University Pathway Program (EAP or IELTS)	NO
Billy Blue College of Design RTO: 41343, CRICOS: 03389E	Sydney		Photo Imaging, Design, Digital Media Design, Interior Design & Decoration, Graphic Design	Communication Design, Digital Media, Interior Design, Branded Environments, Branded Fashion Design	UX and Web Design, Design		Min. 12 weeks of University Pathway Program (EAP or IELTS)	NO
Blue Mountains International Hotel Management School CRICOS: 03389E	Sydney			Hotel and Resort Management, Events Management, International Hotel Management	International Hotel Leadership		Min. 12 weeks of University Pathway Program (EAP or IELTS)	NO
CATC Design School RTO: 0269, CRICOS: 00246M	Brisbane, Melbourne, Sydney		Graphic Design, Interior Design & Decoration, Photo Imaging				Min. 12 weeks of University Pathway Program (EAP or IELTS)	NO
Chiefly Business School RTO: 41343, CRICOS: 03389E	Sydney				Business Information Systems, Business Administration, Public Health		Min. 12 weeks of University Pathway Program (EAP or IELTS)	NO
Collarts RTO: 0109, CRICOS: 03392K	Melbourne		Cookery / Hospitality Hospitality, Management, Event Management, Travel & Tourism	Animation & VFX, Audio Engineering, Comedy, Content Creation, Entertainment Management, Fashion marketing, Interior Design, Music Performance/Production	Entertainment Journalism		Min. 12 weeks of University Pathway Program (EAP or IELTS)	NO
CQU – Central Queensland University RTO: 40939, CRICOS: 00219C	Brisbane, Cairns, Mackay, Melbourne, Perth, Rockhampton, Sydney & more...	Large variety of Undergraduate & Post-Graduate courses available. Please check individual course information at www.handbook.cqu.edu.au/search/index		Large variety of Undergraduate & Post-Graduate courses available. Please check individual course information at www.handbook.cqu.edu.au/search/index			Min. 12 weeks of University Pathway Program (EAP)	YES
Crown College International RTO 3743, CRICOS 03582D	Melbourne		Commercial Cookery, Hospitality, Patisserie	Commercial, Cookery, Hospitality			Min. 12 weeks of University Pathway Program (EAP or IELTS)	NO
Deakin College CRICOS 01590J	Melbourne			Foundation Program (Standard) (CRICOS 089916J) Diploma of Business (CRICOS 063386M) Diploma of Commerce (CRICOS 022637C) Diploma of Construction Management (CRICOS 097892A) Diploma of Design (CRICOS 097895J) Diploma of Engineering (CRICOS 063385A) Diploma of Film, Television and Animation (CRICOS 097894K) Diploma of Health Sciences (CRICOS 059996G) Diploma of Information Technology (CRICOS 097891B) Diploma of Science (CRICOS 063387K)	Diploma of Communication (CRICOS 097893M)		Min. 12 weeks of University Pathway Program (EAP or IELTS)	NO
Evolution Hospitality Institute RTO 91256, CRICOS: 02869G	Sydney		Cookery / Hospitality Hospitality, Management, Event Management, Travel & Tourism				Min. 12 weeks of University Pathway Program (EAP or IELTS)	NO
Flinders University TEQSA: PRV12097, CRICOS: 00114A	Adelaide			Large variety of Undergraduate & Post-Graduate courses available. Please check individual course information at https://www.flinders.edu.au/international			Min. 12 weeks of University Pathway Program (EAP)	NO
Greystone College RTO: 31564, CRICOS: 02137M	Brisbane, Melbourne, Sydney	BSB20115 Cert. II in Business BSB20215 Cert. II in Cust. Engagement (ILSC B4/IELTS 4.0) BSB30115 Cert. III in Business (ILSC I1/IELTS 4.5) BSB40215 Cert. IV in Business (ILSC I2/IELTS 5.0)	BSB42415 Cert. IV in Marketing & Communication BSB41115 Cert. IV in Int. Trade BSB50815 Dip. of Int. Business BSB51915 Dip. of Leadership and Management BSB52415 Dip. of Marketing & Communication BSB51415 Dip. of Project Management BSB61015 Advanced Diploma of Leadership and Management					NO

AUSTRALIA PARTNERS



PARTNER SCHOOLS ENTRY REQUIRES ILSC LANGUAGE LEVELS TO BE REACHED.
 eg. A2 REQUIREMENT MEANS A1 LEVEL HAS BEEN FULLY COMPLETED.
 ‡CLOA – CONDITIONAL LETTER OF ACCEPTANCE
 VET ARTIC- VOCATIONAL EDUCATION TRAINING ARTICULATION

INSTITUTION	CAMPUS LOCATIONS	ILSC B4 – I2* IELTS 4.0–5.0	ILSC I3* IELTS 5.5	ILSC I4* IELTS 6.0	ILSC A1* IELTS 6.5	ILSC A2* IELTS 7.0	ADDITIONAL INFORMATION	VET ARTIC
Griffith College CRICOS: 01737F	Brisbane, Gold Coast		Foundation Program Standard Diploma Programs	Arts & Communication, Commerce & Business, Criminology & Criminal Justice, Design, IT, Science, Hotel Management, Engineering, Health Sciences, Social & Psychological Science			Min. 12 weeks of University Pathway Program (EAP or IELTS) Language pathway includes acceptance of Greystone College Cert IV. & Diploma graduates directly into Diploma courses after 12 months of studies in English	NO
Griffith University CRICOS: 00233E	Brisbane, Gold Coast					Large variety of Undergraduate and Post-graduate courses available. Please check individual course information at https://www.griffith.edu.au/	Min. 12 weeks of University Pathway Program (EAP)	YES
ICQ - International College of Queensland RTO: 41393 CRICOS: 01941B	Sunshine Coast, Cairns		Beauty Therapy, Massage, Salon Management, Make-up for Screen and Media				Min. 12 weeks of University Pathway Program (EAP or IELTS)	NO
Intech Institute of Technology Cricos Code: 02035F	Brisbane		IT, Engineering and Automotive (depending on qualification)	IT, Engineering and Automotive (depending on qualification)			Min. 12 weeks of University Pathway Program (EAP or IELTS)	NO
Jansen Newman Institute RTO: 0269, CRICOS: 00246M	Adelaide, Brisbane, Melbourne, Sydney		Applied Social Science	Counselling & Communication Skills	Applied Social Science		Min. 12 weeks of University Pathway Program (EAP or IELTS)	NO
JMC Academy RTO: 90446, CRICOS: 01259J	Brisbane, Melbourne, Sydney			AudioEngineering + Sound Animation/ Production, Contemporary Music Performance, Digital Design, Entertainment Business Management, Film + TV Production, Game Design / Songwriting	Creative Industries		Min. 12 weeks of University Pathway Program (EAP or IELTS)	NO
Kangan Institute / Bendigo TAFE RTO: 3077, CRICOS: 01218G	Melbourne		Large variety of Certificate, Diploma, Advanced Diploma and Degree courses and industries available. Please check individual course information at www.kangan.edu.au/international/international-students				Min. 12 weeks of University Pathway Program (EAP or IELTS)	NO
Kaplan Business School TEQSA: PRV12094 CRICOS: 02426B	Sydney, Adelaide, Brisbane, Melbourne, Perth			Business	Business, Accounting		Min. 12 weeks of University Pathway Program (EAP only)	NO
Kent Institute TEQSA: PRV12051, RTO: 90458, CRICOS: 00161E	Sydney, Melbourne		Business, Accounting, IT, Aged Care	Business, Accounting, IT			Min. 12 weeks of University Pathway Program (EC, EAP or IELTS)	NO
King's Own Institute TEQSA: PRV12012 CRICOS: 03171A	Sydney				Undergrad and postgrad programs in Business, Accounting, Management and IT	Undergrad and postgrad programs in Business, Accounting, Management and IT	Min. 12 weeks of University Pathway Program (EAP only) excludes TESOL programs	NO
Kirana Colleges RTO: 91341, CRICOS: 03576B	Brisbane, Sydney, Perth		Aged Care, Community Services, Early Childhood & Care, Social Media Marketing				Min. 12 weeks of University Pathway Program (EAP or IELTS) Will accept Greystone College Cert IV or Diploma graduates directly into Dip. courses	NO
Le Cordon Bleu RTO: 4959, CRICOS: 02380M	Adelaide, Brisbane, Melbourne, Perth, Sydney		Commercial Cookery, Hospitality, Patisserie	Business (Hotel Management, Event Management, Restaurant Management, Food Entrepreneurship)	International Hospitality Management		Min. 12 weeks of University Pathway Program (EAP or IELTS)	NO
Media Design School RTO: 41343, CRICOS: 03389E	Brisbane, Melbourne, Sydney			Media Design, Software Engineering (Game Programming), Creative Technologies (Game Art)			Min. 12 weeks of University Pathway Program (EAP or IELTS)	NO
Melbourne City College Australia RTO: 45140, CRICOS: 03592B	Melbourne		Commercial Cookery, Diploma of Hospitality				Min. 12 weeks of University Pathway Program (GE, EAP, IELTS, FCE)	NO
Melbourne Polytechnic RTO: 0416, CRICOS: 00012G	Melbourne and regional VIC		Large variety of Certificate, Diploma, Advanced Diploma and Bachelor courses and industries available. Courses may require between I3 and A1 level English. Please check individual course information at https://www.melbournepolytechnic.edu.au/international-students/				Min. 12 weeks of University Pathway Program (EAP or IELTS) Programs requiring a level of English language proficiency higher than IELTS 6.5 are EXCLUDED from the Pathway agreement	NO

AUSTRALIA PARTNERS

*ILSC LEVELS

B – BEGINNER I – INTERMEDIATE A – ADVANCED



PARTNER SCHOOLS ENTRY REQUIRES ILSC LANGUAGE LEVELS TO BE REACHED.

eg. A2 REQUIREMENT MEANS A1 LEVEL HAS BEEN FULLY COMPLETED.

‡CLOA – CONDITIONAL LETTER OF ACCEPTANCE

VET ARTIC- VOCATIONAL EDUCATION TRAINING ARTICULATION

INSTITUTION	CAMPUS LOCATIONS	ILSC B4 – I2* IELTS 4.0–5.0	ILSC I3* IELTS 5.5	ILSC I4* IELTS 6.0	ILSC A1* IELTS 6.5	ILSC A2* IELTS 7.0	ADDITIONAL INFORMATION	VET ARTIC
SAE Institute RTO: 1036, CRICOS: 02880B	Adelaide, Brisbane, Byron Bay, Melbourne, Sydney, Perth	Large variety of certificates, diplomas, degrees and masters in the Creative Arts. Courses may require I3, I4 or A1 level English. Please check individual course information at https://sae.edu.au/international/					Min. 12 weeks of University Pathway Program (EAP)	NO
SIBT CRICOS: 01576G	Sydney	Variety of Extended Foundation programs https://www.sibt.nsw.edu.au/	Variety of Standard Foundation programs https://www.sibt.nsw.edu.au/	Variety of Diploma programs in Arts, Business Administration, Engineering, IT, Media & Communication			Min. 12 weeks of University Pathway Program (EAP or IELTS)	NO
QTHC – Quality Training & Hospitality College RTO: 1036, CRICOS: 02880B	Adelaide, Sydney		Cookery, Hospitality Management				Min. 12 weeks of University Pathway Program (EAP or IELTS)	NO
Southern School of Natural Therapies RTO: 0269, CRICOS: 00246M	Adelaide, Brisbane, Melbourne, Sydney		Health Science		Health Science (Clinical Myotherapy, Naturopathy, Nutritional Medicine, Western Herbal Medicine)	Health Science (Chinese Medicine)	Min. 12 weeks of University Pathway Program (EAP or IELTS)	NO
SCU – Southern Cross University CRICOS: 01241G	Brisbane, Gold Coast, Lismore, Coffs Harbour, Sydney, Melbourne, Perth Click here to see other locations	Career Study Abroad	Undergraduate Qualifying Program plus all Diplomas	Most Associate Degrees, Bachelor Degrees and some Graduate Certificates and Graduate Diplomas Check the individual courses and fees at https://www.scu.edu.au/study-at-scu/international-future-students/	Bachelor of Community Welfare, most Graduate Certificates, Graduate Diplomas and Masters Degrees	Some Bachelor Degrees in health and social work disciplines and some Graduate Certificates, Graduate Diplomas and Masters Degrees in Health, Social Work and Education	Min. 12 weeks of University Pathway Program (EAP or IELTS)	YES
TAFE NSW RTO: 90003, CRICOS: 00591E	Sydney and regional NSW	Large variety of Certificate, Diploma, Advanced Diploma and Degree courses and industries available. Please check individual course information at www.tafensw.edu.au/international		Large variety of Certificate, Diploma, Advanced Diploma and Degree courses and industries available. Please check individual course information at www.tafensw.edu.au/international			Min. 12 weeks of University Pathway Program (EAP or IELTS)	NO
TAFE QLD RTO: 0275, CRICOS: 03020E	Brisbane and regional QLD	Large variety of Certificate, Diploma, Advanced Diploma and Degree courses and industries available. Please check individual course information at www.international.tafeqld.edu.au/		Large variety of Certificate, Diploma, Advanced Diploma and Degree courses and industries available. Please check individual course information at www.international.tafeqld.edu.au/			Min. 8 weeks of University Pathway Program (EAP or IELTS)	NO
TAFE SA RTO: 41026, CRICOS: 00092B	Adelaide and regional SA	Large variety of Certificate, Diploma, Advanced Diploma and Degree courses and industries available. Please check individual course information at https://www.tafesa.edu.au/					Min. 12 weeks of University Pathway Program (EAP or IELTS)	NO
TasTAFE RTO: 60142, CRICOS: 03041M	Hobart and regional TAS	Large variety of Certificate, Diploma, Advanced Diploma and Degree courses and industries available. Please check individual course information at https://www.tastafe.tas.edu.au/international					Min. 12 weeks of University Pathway Program (EAP)	NO
The Hotel School CRICOS: 01241G	Sydney, Brisbane, Melbourne			International Tourism & Hotel Management	International Tourism & Hotel Management		Min. 12 weeks of University Pathway Program (EAP or IELTS)	NO
Torrens University RTO: 41343, CRICOS: 03389E	Adelaide, Brisbane, Melbourne, Sydney	Large variety of Undergraduate & Post-Graduate courses available. Please check individual course information at www.torrens.edu.au/andhttp://www.think.edu.au/		Large variety of Undergraduate & Post-Graduate courses available. Please check individual course information at www.torrens.edu.au/andhttp://www.think.edu.au/			Min. 12 weeks of University Pathway Program (EAP or IELTS)	YES
UNE – University of New England CRICOS: 00003G	Armidale, Sydney	Large variety of Undergraduate & Post-Graduate courses available. Please check individual course information at www.une.edu.au/study/international		Large variety of Undergraduate & Post-Graduate courses available. Please check individual course information at www.une.edu.au/study/international			Min. 12 weeks of University Pathway Program (EAP or IELTS)	NO
USQ - University of Southern Queensland CRICOS: QLD 00244B NSW 02225M	Regional QLD	Large variety of Undergraduate & Post-Graduate courses available. Please check individual course information at www.usq.edu.au/study/international		Large variety of Undergraduate & Post-Graduate courses available. Please check individual course information at www.usq.edu.au/study/international			Min. 12 weeks of University Pathway Program (EAP only)	NO
University of Wollongong CRICOS: 00102E	Wollongong, Sydney and regional NSW	Large variety of Undergraduate & Post-Graduate courses available. Please check individual course information at www.uow.edu.au					Min. 12 weeks of University Pathway Program (EAP only)	NO
William Angliss Institute RTO: 3045, CRICOS: 01505M	Sydney, Melbourne		Baking, Cookery, Patisserie, Hospitality Management, Events, Tourism & Travel	Food Science, Tourism, Hospitality			Min. 12 weeks of University Pathway Program (EAP or IELTS)	NO
William Blue College of Hospitality Management RTO: 41343, CRICOS: 03389E	Adelaide, Brisbane, Melbourne, Sydney		Business (Hospitality Management and Tourism Management), Culinary Management				Min. 12 weeks of University Pathway Program (EAP or IELTS)	NO
ZOI Education RTO: 45174, CRICOS: 03611D	Melbourne		Child Care				Min. 12 weeks of University Pathway Program (EAP or IELTS)	NO

USA

ILSC students can transfer to our partner schools in the USA after completing their University Pathway program at ILSC locations in Canada and Australia. Please contact ILSC if you are interested in learning more about our USA partners.



SELECT USA PARTNER SCHOOLS



SELECT USA PARTNERS

*ILSC LEVELS
B – BEGINNER I – INTERMEDIATE A – ADVANCED



PARTNER SCHOOLS ENTRY REQUIRES ILSC LANGUAGE LEVELS TO BE COMPLETED.
eg. A2 REQUIREMENT MEANS A2 LEVEL HAS BEEN FULLY COMPLETED.
‡CLOA – CONDITIONAL LETTER OF ACCEPTANCE

SCHOOL NAME	LOCATION	UNIVERSITY TRANSFER/ ASSOCIATE DEGREE		CERTIFICATE/ DIPLOMA		BACHELORS		POST GRADUATE CERTIFICATE/ DIPLOMA		MASTERS		POPULAR FIELDS	ADDITIONAL INFORMATION
		ILSC LEVEL*	‡CLOA	ILSC LEVEL*	‡CLOA	ILSC LEVEL*	‡CLOA	ILSC LEVEL*	‡CLOA	ILSC LEVEL*	‡CLOA		
Adelphi University*	Garden City, NY	N/A		N/A		I4	Yes	N/A		N/A			
Alliant University	San Diego, CA	N/A		N/A		A1	Yes	A2	Yes	A2	Yes	Business, Psychology, and Education	No pathway to law programs.
American University*	Washington, DC	N/A		N/A		I4	Yes	N/A		N/A			
Art Institutes	Visit website for full list	I4	Yes	I4	Yes	I4	Yes	N/A		A1	Yes	Media arts, fashion design, culinary	Program availability differs by campus.
Auburn University*	Auburn, AL	N/A		N/A		I4	Yes	N/A		A1	Yes	Business, Engineering, Pharmacy	
Berkeley College	New York, NY	N/A		N/A		I4	Yes	N/A		I4	Yes	Business	Masters: Conditional acceptance letters are released only after the interview process and application have been received.
Boston Architectural College	Boston, MA	N/A		A1	Yes	A1	Yes	A1	Yes	A1	Yes	Architecture, Interior Architecture, Landscape Architecture, Design Studies	
Central College	Pella, IA	N/A		N/A		A2	Yes	N/A		N/A		Business (Accounting, Economics, Communication Studies, Management)	
DeVry University	Visit website for full list	N/A		N/A		A1	Yes	N/A		A2	Yes	MBA	No GRE/GMAT required.
Florida International University*	Miami, FL	N/A		N/A		N/A		N/A		N/A		Hospitality Management, Business, Finance	
Foothill/DeAnza	Los Altos Hills, CA	I4	Yes	I4	Yes	N/A	Yes	N/A		N/A		Transfer guarantee option with UCs and other reputable 4-year universities	
Full Sail University	Winter Park, FL	N/A		N/A		A1	Yes	N/A		A1	Yes	Music (Recording), Video and Film Production	
Humboldt University	Arcata, CA	N/A		N/A		I4	Yes	N/A		A1	Yes	Environmental science	GRE/GMAT required for some Masters programs in order to receive CLOA.
Johnson & Wales University	Providence, RI; Miami, FL; Denver, CO; Charlotte, NC	N/A		A1	Yes	A1	Yes	A1	Yes	A1	Yes	Culinary, Hotel Management, Hospitality, Fashion Merchandising	Requires an on-campus English test for English class placement (no additional fee); test is taken after students are accepted and arrive on campus
Lasell College	Auburndale, MA	N/A		N/A		A1	Yes	N/A		N/A		Fashion Design	
Lincoln University	Oakland, CA	N/A		N/A		I4	Yes	N/A		I4	Yes	MBA	No GRE/GMAT
LIM College	Manhattan, NY	N/A		A1	Yes	A1	Yes	A1	Yes	A1	Yes	Fashion Merchandising, International Business, Marketing, Management, Visual Merchandising	
Louisiana State University*	Baton Rouge, LA	N/A		N/A		N/A		N/A		N/A		Business, Engineering	
MCPHS	Boston, MA	N/A		N/A		A2	Yes	N/A		N/A		Nursing, Dental Hygiene, Magnetic Resonance Imaging, Radiation Therapy, Pharmaceutical Sciences	
Medaille College	Buffalo, NY	N/A		N/A		A1	Yes	A1	Yes	A1	Yes		
Mercy College	New York, NY	N/A		I4	Yes	I4	Yes	I4	Yes	I4	Yes	Social Sciences; Health Professions and Related Programs; Business, Management, Marketing, and Related Support Services; Psychology; and Homeland Security, Law Enforcement, Firefighting and Related Protective Services	Students can take 100 level courses at I3 as non-degree students

*Admission from ILSC to the international accelerator programs at these schools—1 year programs in which credit courses are integrated with extra language and study support for international students

SELECT USA PARTNERS



PARTNER SCHOOLS ENTRY REQUIRES ILSC LANGUAGE LEVELS TO BE COMPLETED.
 eg. A2 REQUIREMENT MEANS A2 LEVEL HAS BEEN FULLY COMPLETED.
 ‡CLOA – CONDITIONAL LETTER OF ACCEPTANCE

SCHOOL NAME	LOCATION	UNIVERSITY TRANSFER/ ASSOCIATE DEGREE		CERTIFICATE/ DIPLOMA		BACHELORS		POST GRADUATE CERTIFICATE/ DIPLOMA		MASTERS		POPULAR FIELDS	ADDITIONAL INFORMATION
		ILSC LEVEL*	‡CLOA	ILSC LEVEL*	‡CLOA	ILSC LEVEL*	‡CLOA	ILSC LEVEL*	‡CLOA	ILSC LEVEL*	‡CLOA		
Middle Tennessee State University	Murfreesboro, TN	N/A		N/A		I4	Yes	N/A		N/A		Aerospace, Recording (music), Megatronics, Construction Management	
SUNY Fulton Montgomery Community College	Johnstown, NY	I4	Yes	N/A		N/A		N/A		N/A		Accounting, Arts, Business, Computers, Electrical Technology, Health Science	
Montana State University	Bozeman, MT	N/A		N/A		A2	Yes	N/A		N/A		Business, Engineering, Architecture, Film	
New York Film Academy	New York, NY	N/A		A2	Yes	A2	Yes	N/A		A2	Yes	Film, Acting	LA campus is the only accredited degree granting campus.
Northern Arizona University	Flagstaff, AZ	N/A		N/A		A1	Yes	N/A		N/A		Hotel/Resort Management, Business	Only undergrad programs are seamless.
Pacific College of Oriental Medicine	San Diego, CA	I4	Yes	I4	Yes	I4	Yes	N/A		I4	Yes	Oriental Medicine, Acupuncture, Massage Therapy	
Pacific Lutheran University	Tacoma, WA	N/A		N/A		A2	Yes	N/A		N/A		Liberal Arts	
San Mateo Community College District (San Mateo, Cañada, Skyline)	San Mateo, CA Redwood City, CA San Bruno, CA	I4	Yes	I4	Yes	I4	Yes	N/A		N/A		Computer Science, Digital Media, Biology, Psychology, Art, Cosmetology	Transfer guarantee option with UCs and other reputable 4 year universities
Santa Barbara City College	Santa Barbara, CA	A2	Yes	A2	Yes	A2	Yes	N/A		N/A			Transfer guarantee option with UCs and other reputable 4 year universities
Santa Monica College	Santa Monica, CA	I3	Yes	I3	Yes	N/A		N/A		N/A			Transfer guarantee option with UCs and other reputable 4 year universities
Seattle Central College	Seattle, WA	I3	Yes	N/A		N/A		N/A		N/A		Science, Arts, Applied Science transfer	
Southern New Hampshire University	Hooksett, NH	N/A		N/A		A2	Yes	N/A		A2	Yes	Business	No GRE/GMAT required for MBA (MA TESL not available)
SUNY Oneonta	Oneonta, NY	N/A		N/A		A2	Yes	N/A		N/A			
Tennessee Tech University	Cookeville, TN	N/A		N/A		I4	Yes	N/A		N/A		Engineering, Environmental Technology, Agriculture, Agrotourism	
UCSC Silicon Valley Extension	Santa Clara, CA	N/A		N/A		N/A		A1	Yes	N/A		Biosciences, Business Administration, Computer Programming, Information Technology, Software Engineering and Quality	Min. bachelor degree required, OPT available after program completion
University of Central Florida*	Orlando, FL	N/A		N/A		N/A		N/A		N/A		Aerotechnology, Aerospace	TOEFL or IELTS or Pearson Versant
University of Kansas*	Lawrence, KS	N/A		N/A		N/A		N/A		N/A		Business, Engineering	TOEFL or IELTS or Pearson Versant
University of Michigan-Flint	Flint, MI	N/A		N/A		A2	Yes	N/A		N/A		Computer Science, Biology, Engineering	Only undergrad programs are seamless.
University of South Carolina*	Columbia, SC	N/A		N/A		N/A		N/A		N/A		International Business	TOEFL or IELTS or Pearson Versant

*Admission from ILSC to the international accelerator programs at these schools—1 year programs in which credit courses are integrated with extra language and study support for international students



LANGUAGE
SCHOOLS

CONTACT

CANADA: UNIVERSITY.PATHWAYS@ILSC.COM

AUSTRALIA: UNIVERSITYPATHWAYS.AUSTRALIA@ILSC.COM.AU

[ILSC.COM/PROGRAMS/UNIVERSITY-PATHWAY](https://ilsc.com/programs/university-pathway)



CELEBRATING 30 YEARS OF
EMPOWERING STUDENTS THROUGH EDUCATION